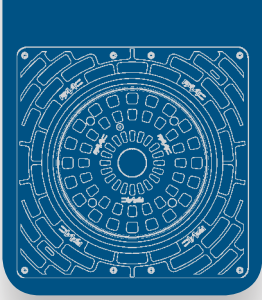




# J SERIES BOLLARDS



# Bollards Series



**FAAC bollards range.  
Endless solutions, performance beyond the standard**

**Innovative solutions to meet  
any application need**

**FAAC Hydraulic Technology,  
over 50 years of worldwide excellence**

**High quality components  
to ensure exceptional performance**

**«Design for Assembly» approach; products  
designed to simplify installation and maintenance**

**The strength of the FAAC Group;  
worldwide presence to support your project**

**Jseries**



## J200 Series for residential areas

**(HA) Automatic**

To manage vehicle access to residential areas

**(SA) Semi-Automatic**

To manage access to areas that are occasionally open to traffic; it doesn't need to be wired.

**(F) Fixed**

To complete installations with other retractable models for access control



## J275 Series for commercial, industrial and urban restricted access areas

**(HA) Automatic**

To manage vehicular access to commercial, industrial and urban restricted access areas

**(SA) Semi-Automatic**

To manage vehicle access to town centres, areas that are difficult to wire or occasionally open to traffic

**(F) Fixed**

To complete installations with other retractable models for access control



## J355 M30-P1 Series certified perimeter security

**(HA) Automatic**

To define, protect and regulate vehicle access to sensitive areas (embassies, military areas, etc.) and, in general, to sites with special security requirements

**(F) Fixed**

For the perimeter protection of sensitive areas, in fixed installations or combined with other retractable models



## J355 M50 Series certified perimeter security

**(HA) Automatic**

Designed and tested to protect extremely sensitive areas and all those areas with special perimeter security requirements against terroristic attacks

**(F) Fixed**

For the perimeter protection of sensitive areas, allows complete aesthetic coherence with automatic models (HA); ideal for mixed installations





# Bollards for residential areas J200

## 1. J200 HA AUTOMATIC RETRACTABLE TRAFFIC BOLLARD

The Automatic retractable traffic bollard FAAC J200HA is particularly suitable to manage vehicle traffic in residential areas, ensuring an intelligent control, while maintaining a pleasant aesthetic appearance.



J200

## 2. J200 SA SEMI-AUTOMATIC TRAFFIC BOLLARD

This bollard solves transit and/or parking control problems without needing electrical power (making it particularly suitable for use in historical city centres and areas which are difficult to wire). The bollard is key-operated and automatically lifted by a gas operator. The bollard is lowered by using the same key and pressing on the head.

## 3. J200 F FIXED TRAFFIC BOLLARD

The Fixed traffic bollard FAAC J200 does not require invasive installation work, nor electrical wiring. It is therefore ideal for permanent installations to define residential pedestrian areas, or for mixed installations which also feature other automatic or semi-automatic bollards.





# J200 HA AUTOMATIC retractable traffic bollard

1. Easy to transport, store and install, thanks to the self-supporting structure and to the limited weight of the product
2. Easy underground pit laying and limited excavation
3. A streamlined product, configurable by selecting the desired installation accessories
4. Simplified maintenance (just one person needed)
5. Integrated hydraulic unit



## DIMENSIONS AND TECHNICAL SPECIFICATIONS

Item	J200 HA H600	J200 HA H600 Stainless Steel
Type of operator	Hydraulic Actuator	
Cylinder height from ground	23.6 in (600 mm)	
Cylinder diameter	7.9 in (200 mm)	
Cylinder material	Steel S235JRG2 EN 10277 0.24 in (6mm thick)	Satin-finished AISI 316L 0.24 in (6mm thick)
Cylinder treatment	Cataphoresis and polyester powder paint, dark grey metallised RAL 7021	Satin finish
Rising time	About 5 s	
Descent time	About 7 s	
Emergency descent device	YES (optional)	
Emergency descent time	About 7 s	
Rising obstacle detection device	YES (optional)	
Release device	YES	
Power supply voltage	220-240V ~ 50/60Hz	
Max. power	230 W	
Hydraulic pump unit protection class	IP67	
Type of use	Use in residential areas	
Total weight	198 lbs (90 Kg)	
Operating ambient temperature	5 °F / 131 °F (-15 °C / +55 °C)	
Operating ambient temperature with heater	-13 °F / 131 °F (-25 °C / +55 °C)	
Walled in pit with cylinder profile (LxWxH)	16 x 20 x 32 in (400 x 500 x 800 mm)	

J200 HA

### STANDARD PAINTED STEEL VERSION

Model	Height	Finish	Part No.
J200 HA 600	23.6 in (600 mm)	painted steel	116500

**The product comes with:**

- 0.24 in (6 mm) thick steel cylinder with cathaphoresis treatment and painted
- powder coated dark grey metallised RAL 7021
- hydraulic lock in raised position (in the event of a power failure) with special release key
- support structure to be cemented with cathaphoresis treatment (pits not required)

### STANDARD AISI 316L STAINLESS STEEL VERSION


Model	Height	Finish	Part No.
J200 HA 600	23.6 in (600 mm)	satin-finished AISI 316L stainless steel	116505

**The product comes with:**





- 0.24 in (6 mm) thick stainless steel cylinder with satin-finish treatment
- hydraulic lock in raised position (in the event of a power failure) with special release key
- support structure to be cemented with cathaphoresis treatment (pits not required)



### ELECTRONIC EQUIPMENT

Item	Part No.	
Bollard electronic board JE275 able to manage up to 4 bollards J200 HA	116300	

### OPTIONAL ACCESSORIES

Item	Part No.	
Pit heater J200HA (to extend operation up to -13°F)	116501	
Release kit with pressure switch for J200 HA	116502	
Acoustic buzzer J200 HA	116503	
LED lights kit J200 HA	116504	



# J200 SA SEMI-AUTOMATIC traffic bollard

1. Power supply and wiring not required
2. Simple and safe movement, thanks to the specific unlocking key
3. Easy to transport, store and install, thanks to the limited weight of the product
4. Lock in rised position guaranteed against accidental release.



J200 SA

## DIMENSIONS AND TECHNICAL SPECIFICATIONS

Model	J200 SA H600	J200 SA H600 Stainless steel
Type of operator	Single-acting gas operator	
Cylinder height from ground	23.6 in (600 mm)	
Cylinder diameter	7.9 in (200 mm)	
Cylinder material	Steel S235JRG2 EN 10277 0.24 in (6mm thick)	Satin-finished AISI 316L 0.24 in (6mm thick)
Cylinder treatment	Cataphoresis and polyester powder paint, dark grey metallised RAL 7021	Satin finish
Release device	Key operated (supplied)	
Reflective strip height	1 in (25 mm)	
Standard reflecting strip colour	Orange	
Total weight	181 lbs (82 Kg)	
Walled in pit with cylinder profile (LxWxH)	16 x 20 x 32 in (400 x 500 x 800 mm)	





#### PAINTED STEEL VERSION

Model	Height	Finish	Part No.
J200 SA 600	23.6 in (600 mm)	Painted steel	116508

#### The product comes with:

- 0.24 in (6 mm) thick steel cylinder with cathophoresis treatment and painted
- powder paint, dark grey metallised RAL 7021
- support structure to be cemented with cathophoresis treatment (pits not required)
- release key (1 piece)



#### AISI 316L STAINLESS STEEL VERSION

Model	Height	Finish	Part No.
J200 SA 600	23.6 in (600 mm)	satin-finished AISI 316L stainless steel	116509

#### The product comes with:

- 0.24 in (6 mm) thick stainless steel cylinder with satin-finished treatment
- support structure to be cemented with cathophoresis treatment (pits not required)
- release key (1 piece)

#### OPTIONAL ACCESSORIES

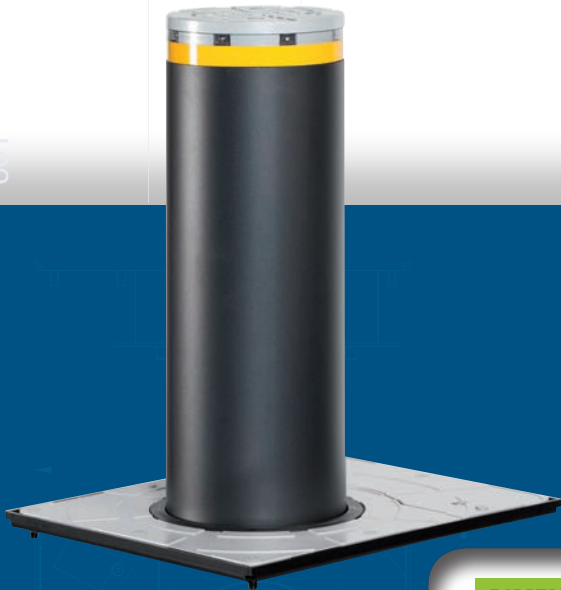
Item	Part No.	
Release keys kit (5 keys)	390084	
LED lights kit J200*	116504	

(\* ) The power supply unit (24 Vdc) and the cable (AWG16) for the lights ring are not supplied.



# J200 F FIXED traffic bollard

1. Power supply and wiring not required
2. Simple installation and limited digging operations
3. Maintains aesthetic consistency in multi-bollard applications or where automatic bollards are not required



## DIMENSIONS AND TECHNICAL SPECIFICATIONS

Model	J200 F H600	J200 F H600 Stainless steel
Cylinder height from ground	23.6 in (600 mm)	
Cylinder diameter	7.9 in (200 mm)	
Cylinder material	Steel S235JRG2 EN 10277 0.24 in (6mm thick)	Satin-finished AISI 316L 0.24 in (6mm thick)
Cylinder treatment	Cataphoresis and polyester powder paint, dark grey metallised RAL 7021	Satin finish
Reflective strip height	1 in (25 mm)	
Standard reflecting strip color	Orange	
Total weight	77 lbs (35 Kg)	
Walled in pit with cylinder profile (LxWxH)	16 x 20 x 32 in (400 x 500 x 800 mm)	

# J200 F



**PAINTED STEEL VERSION**

Model	Height	Finish	Part No.
J200 F 600	23.6 in (600 mm)	powdered steel	116506

**The product comes with:**

- 0.24 in (6 mm thick) stainless steel cylinder with satin-finished treatment
- Powder paint, dark grey metallised RAL 7021

**AISI 316L STAINLESS STEEL VERSION**

Model	Height	Finish	Part No.
J200 F 600	23.6 in (600 mm)	satin-finished AISI 316L stainless steel	116507

**The product comes with:**

- 0.24 in (6 mm) thick stainless steel cylinder with satin-finished treatment

**OPTIONAL ACCESSORIES**

Item	Part No.
LED lights kit J200*	116504

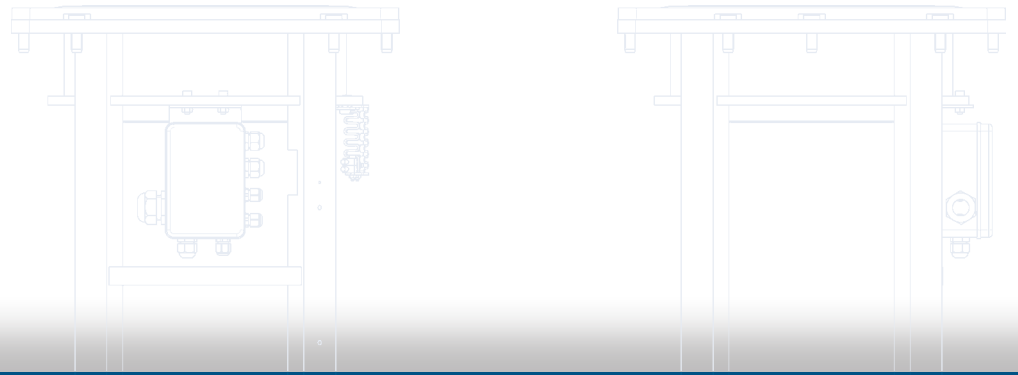


(\* ) The power supply unit (24 Vdc) and the cable (AWG16) for the lights ring are not supplied.





# Bollards for commercial, industrial and urban restricted access areas J275





### 1. J275 HA V2 AUTOMATIC RETRACTABLE TRAFFIC BOLLARD

The Automatic retractable traffic bollard J275 HA V2 is recommended for all areas where many daily transits are expected, i.e. commercial, industrial and urban restricted access areas.

### 2. J275 SA SEMI-AUTOMATIC RETRACTABLE TRAFFIC BOLLARD

The Semi-Automatic retractable traffic bollard J275 SA is particularly suitable for town centres and areas difficult to wire.

In fact, thanks to a gas actuator, raising and lowering is fully mechanical and does not require any electrical connection.

### 3. J275 F FIXED TRAFFIC BOLLARD

The Fixed traffic bollard FAAC J275 does not require invasive installation work, nor electrical wiring. It is therefore ideal for permanent installations to define pedestrian areas, or for mixed installations which also feature other retractable bollards.





# J275 HA V2 AUTOMATIC retractable traffic bollard


1. Guaranteed for high frequency use
2. Supplied with the main accessories already included.
3. Simplified maintenance (just one person is needed)
4. Integrated hydraulic unit
5. Perfect interchangeability with first generation bollards
6. "Gentle stop" function to guarantee a soft impact on descent



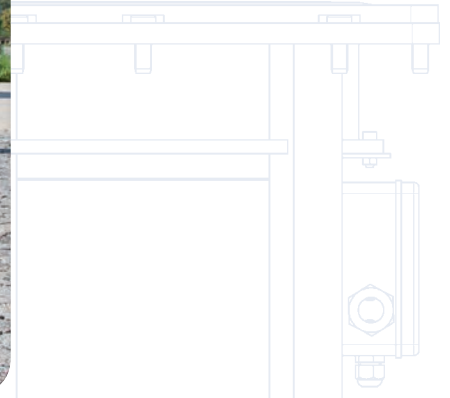
## DIMENSIONS AND TECHNICAL SPECIFICATIONS

Model	J275 HA V2 H600	J275 HA V2 H800	J275 HA V2 H600 Stainless Steel	J275 HA V2 H800 Stainless Steel
Type of operator	Hydraulic Actuator			
Cylinder height from ground	23.6 in (600 mm)	31.5 in (800 mm)	23.6 in (600 mm)	31.5 in (800 mm)
Cylinder diameter	10.8 in (275 mm)			
Cylinder material	Steel S235JR EN 10219 0.28 in (7mm) thick		Satin-finished AISI 316L 0.24 in (6mm) thick	
Cylinder treatment	Cataphoresis and polyester powder paint, dark grey metallised RAL 7021		Satin finish	
Rising time	About 5 s	About 7 s	About 5 s	About 7 s
Descent time	About 3.5 s	About 4.5 s	About 3.5 s	About 4.5 s
Fast descent device	YES (optional)			
Fast descent time	About 1.2 s	About 1.5 s	About 1.2 s	About 1.5 s
Rising obstacle detection device	YES			
Release device	YES			
Power supply voltage	220-240V ~ 50/60Hz			
Max. power	575 W			
Hydraulic pump unit protection class	IP67			
Type of use	Intensive use (Traffic)			
Impact resistance	38 KJoules		67 KJoules	
Break in resistance	128 KJoules		207 KJoules	
Pit weight	121 lb (55 Kg)	143 lb (65 Kg)	121 lb (55 Kg)	143 lb (65 Kg)
Traffic bollard weight	247 lb (112 Kg)	287 lb (130 Kg)	247 lb (112 Kg)	287 lb (130 Kg)
Operating ambient temperature	5 °F / 131 °F (-15 °C / +55 °C)			
Operating ambient temperature with heater	-13 °F / 131 °F (-25 °C / +55 °C)			
Walled in pit with cylinder profile (LxWxH)	22 x 22 x 37 in (560 x 560 x 950 mm)	22 x 22 x 48 in (560 x 560 x 1220 mm)	22 x 22 x 37 in (560 x 560 x 950 mm)	22 x 22 x 48 in (560 x 560 x 1220 mm)
Soft impact function	YES			

## ELECTRONIC EQUIPMENT

Item	Part No.	
Bollard electronic board JE275 able to manage up to three bollards J275 HA	116300	

J275 HA V2



### PAINTED STEEL VERSIONS

Models	Height	Finish	Part No.
J275 HA V2 600	23.6 in (600 mm)	painted steel	116006
J275 HA V2 800	31.5 in (800 mm)		116007

#### The product comes with:

- 0.28 in (7 mm thick) steel cylinder with cathoresis treatment and painted
- powder paint, dark grey metallised RAL 7021
- flashing light ring with central LED
- acoustic buzzer during movement
- emergency lowering in the event of a power failure (optional)
- manual release key for emergency lowering (1 pc.)

### AISI 316L STAINLESS STEEL VERSIONS



Models	Height	Finish	Part No.
J275 HA V2 600	23.6 in (600 mm)	satin-finished AISI 316 L stainless steel	116036
J275 HA V2 800	31.5 in (800 mm)		116037

#### The product comes with:

- 0.24 in (6 mm) thick stainless steel cylinder with satin-finished treatment
- flashing light ring with central LED
- acoustic buzzer during movement
- emergency lowering in the event of a power failure (optional)
- manual release key for emergency lowering (1 pc.)





### INSTALLATION ACCESSORIES

Item	Part No.	
Pit JP 275/600 for bollard H600 complete with counter frame	1161001	
Pit extension JP 275/800* for bollard H800*	1161011	

(\*) For the H800 version the following two elements must be ordered: 116100 + 116101.

### OPTIONAL ACCESSORIES

Item	Part No.	
Pit heater JH275 (to extend operation down to -13°F (-25°C))	116200	
Pit cover JC275	116201	



# J275 SA SEMI-AUTOMATIC retractable traffic bollard

1. Power supply and wiring not required
2. Simple and safe movement, thanks to the specific release key
3. Supplied with the main accessories already included
4. Low position lock guaranteed against accidental release
5. Easy maintenance



J275 SA

## DIMENSIONS AND TECHNICAL SPECIFICATIONS

Model	J275 SA H600	J275 SA H600 Stainless steel
Type of operator	Single-acting gas operator	
Cylinder height from ground	23.6 in (600 mm)	
Cylinder diameter	10.8 in (275 mm)	
Cylinder material	Steel S235JR EN 10219 0.28 in (7mm) thick	Satin-finished AISI 316L 0.24 in (6mm) thick
Cylinder treatment	Cataphoresis and polyester powder paint, dark grey metallised RAL 7021	Satin finish
Release device	Key operated (supplied)	
Impact resistance	38 KJoules	67 KJoules
Break in resistance	128 KJoules	207 KJoules
Pit weight	121 lb (55 Kg)	
Traffic bollard weight	154 lb (70 Kg)	
Walled in pit with cylinder profile (LxWxH)	22 x 22 x 37 in (560 x 560 x 950 mm)	





#### PAINTED STEEL VERSION

Model	Height	Finish	Part No.
J275 SA 600	23.6 in (600 mm)	painted steel	116050

#### The product comes with:

- 0.28 in (7 mm) thick steel cylinder with cathaphoresis treatment and painted
- powder paint, dark grey metallised RAL 7021
- flashing light ring with central LED\*
- mechanical lock in raised position with special release key (2 pcs.)

#### AISI 316L STAINLESS STEEL VERSION


Model	Height	Finish	Part No.
J275 SA 600	23.6 in (600 mm)	satin-finished AISI 316L stainless steel	116060

#### The product comes with:



- 0.24 in (6 mm) thick stainless steel cylinder with satin-finished treatment
- flashing light ring with central LED\*
- mechanical lock in raised position with special release key (2 pcs.)

(\* ) The power supply unit (24 Vdc) and the cable (AWG16) for the lights ring are not supplied.

#### INSTALLATION ACCESSORIES

Item	Part No.	
Pit JP 275/600 for bollard H600 complete with counter frame	1161001	

#### OPTIONAL ACCESSORIES

Item	Part No.	
Release keys kit (5 keys)	390084	
Pit cover JC275	116201	



# J275 F FIXED traffic bollard

1. Power supply and wiring not required
2. Simple installation and limited digging operations
3. Maintains aesthetic consistency in multi-bollard applications or where automatic bollards are not required.
4. Possibility to remove the bollard to temporarily open the pedestrian area to traffic



## DIMENSIONS AND TECHNICAL SPECIFICATIONS

Model	J275 F H600	J275 F H800	J275 F H600 Stainless steel	J275 F H800 Stainless steel
Cylinder height from ground	23.6 in (600 mm)	31.5 in (800 mm)	23.6 in (600 mm)	31.5 in (800 mm)
Cylinder diameter	10.8 in (275 mm)			
Cylinder material	Steel S235JR EN 10219 0.16 in (4mm) thick		AISI 316L satin finishing 0.12 in (3mm) thick	
Cylinder treatment	Cathaphoresis and polyester powder paint, dark grey metallised RAL 7021		Satin finish	
Reflective strip height	2.2 in (55 mm)			
Standard reflecting strip color	Orange			
Break in resistance	35 KJoules		59 Kjoules	
Total weight	75 lb (34 Kg)	84 lb (38 Kg)	75 lb (34 Kg)	84 lb (38 Kg)
Walled in pit with cylinder profile (LxWxH)	18 x 18 x 2.2 in (450 x 450 x 55 mm)			

## INSTALLATION ACCESSORIES

Item	Part No.	
Fixed bollard fixing frame JPF275	116120	

# J275 F



#### PAINTED STEEL VERSIONS

Models	Height	Finish	Part No.
J275 F 600	23.6 in (600 mm)	painted steel	116020
J275 F 800	31.5 in (800 mm)		116021

#### The product comes with:

- 0.16 in (4 mm) steel cylinder cathaphoresis treated and painted
- powder coated dark grey metallised RAL 7021
- flashing light ring with central LED\*

#### AISI 316L STAINLESS STEEL VERSIONS

Models	Height	Finish	Part No.
J275 F 600	23.6 in (600 mm)	satin-finished AISI 316L stainless steel	116040
J275 F 800	31.5 in (800 mm)		116041

#### The product comes with:

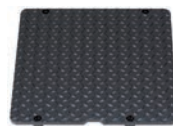
- 0.12 in (3 mm) thick stainless steel cylinder with satin-finished treatment
- flashing light ring with central LED\*

(\* ) The power supply unit (24 Vdc) and the cable (AWG16) for the lights ring are not supplied.



#### OPTIONAL ACCESSORIES

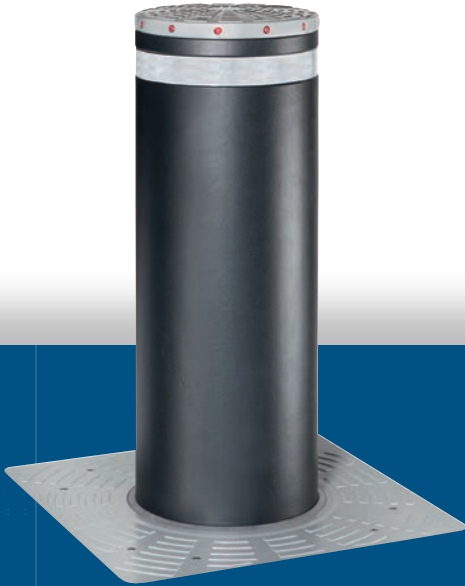
Item	Part No.
Pit cover JC275	116201





# J355 bollard certified for use in perimeter security areas

Traffic bollards range specifically dedicated to high security and antiterrorism, ideal to protect every kind of sensitive area and regulate traffic in strategic crossing points



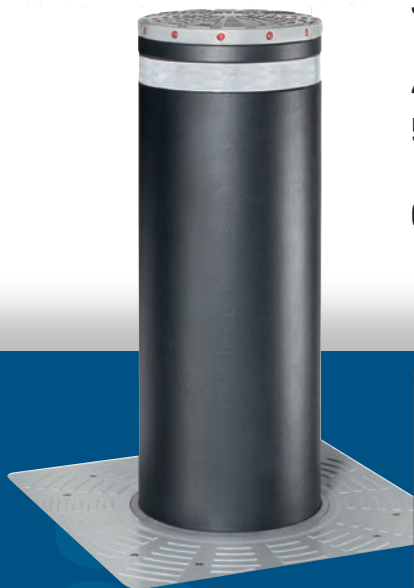
J355





# J355 HA M30-P1 bollard certified for use in perimeter security areas

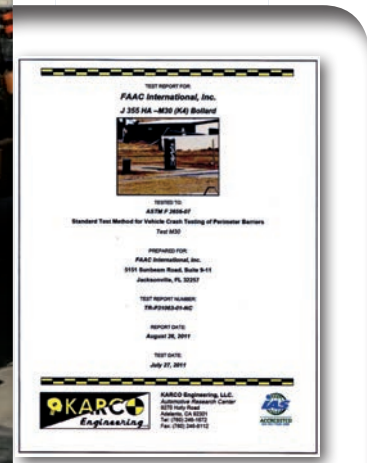
1. Certified according to ASTM F 2656-07 Standards
2. Impact resistance class M30 IN SINGLE CONFIGURATION
3. Able to stop a 15,000 lb (6,800 kg) truck travelling at 30 mph (50K/h) with just 39 in (1 meter) of total penetration (P1)
4. Lock in raised position guaranteed even in the event of a power failure
5. Also available in the EFO (Emergency Fast Operation) version for very fast rise
6. Integrated hydraulic unit



J355 HA M30

## DIMENSIONS AND TECHNICAL SPECIFICATIONS

Model	J355 HA M30-P1	355 HA M30-P1 Stainless steel	J355 HA M30-P1 EFO	J355 HA M30-P1 EFO Stainless steel
Type of operator	Hydraulic Actuator			
Cylinder height from ground	39.4 in (1,000 mm)			
Cylinder diameter	14 in (355 mm)			
Cylinder material	Steel S355JR EN10210 0.63 in (16mm) thick			
Cylinder treatment	Cataphoresis and polyester powder paint, dark grey metallised RAL 7021	AISI 316L satin finishing	Cataphoresis and polyester powder paint, dark grey metallised RAL 7021	AISI 316L satin finishing
Rising time	About 6 s			
Emergency rise device	NO		YES(EFO)	
Emergency rising time	-		About 1.5 s	
Descent time	About 2 s			
Release device	optional			
Power supply voltage	220-240V ~ 50/60Hz			
Max. power	2.8 Kw			
Hydraulic pump unit protection class	IP67			
Type of use	Use in security areas			
Max expressed force	1,124 lbf (5,000 N)			
Impact resistance	150 Kjoules			
Break in resistance	656 Kjoules (compliance with Standards ASTM F2656-07 - M30)			
Pit weight	397 lbs (180 Kg)			
Traffic bollard weight	1212.5 lb (550 Kg)	1234.5 lb (560 Kg)	1212.5 lb (550 Kg)	1234.5 lb (560 Kg)
Operating ambient temperature	5 °F / 131 °F (-15 °C / +55 °C)			
Operating ambient temperature with heater	-40 °F / 131 °F (-40 °C / +55 °C)			
Walled in pit with cylinder profile (LxWxH)	22.5 x 27 x 65.5 in (590 x 670 x 1,665 mm)			



### PAINTED STEEL VERSIONS

Models	Height	Finish	Part No.
J355 HA M30	39.4 in	painted steel	116301
J355 HA M30 EFO	(1,000 mm)		116302

#### The product comes with:

- 0.63 in (16 mm) thick steel cylinder with cataphoresis treatment and painted
- powder coated dark grey metallised RAL 7021
- flashing light ring with central LED
- hydraulic lock in raised position (in the event of a power failure)
- emergency circuit for fast rise (EFO version only)


### AISI 316L STAINLESS STEEL VERSIONS

Models	Height	Finish	Part No.
J355 HA M30	39.4 in	satin-finished AISI 316 L stainless steel	116331
J355 HA M30 EFO	(1,000 mm)		116332

#### The product comes with:

- 0.63 in (16 mm) thick steel cylinder with cataphoresis treatment and satin-finished stainless steel «sleeve»
- flashing light ring with central LED
- hydraulic lock in raised position (in the event of a power failure)
- emergency circuit for fast rise (EFO version only)

### ELECTRONIC EQUIPMENT

Item	Part No.	
Bollard electronic board JE275 able to manage up to max 1 bollard J355 HA	116300	

### INSTALLATION ACCESSORIES

Item	Part No.	
Pit heater J355 (to extend operation down to -40 °F (-40°C))	116202	
Manual release key	116102	
Pit for J355 HA	116110	





# J355 F M30 bollard certified for use in perimeter security areas



1. Tested according to ASTM F 2656-07 American standards for installations in double units
2. Able to stop a 15,000 lb (6,800 kg) truck travelling at 30 mph (50Km/h)
3. «Shallow Mounted» product: very low excavation depth needed
4. Total aesthetic consistency with other retractable bollards (HA); perfect for mixed installations

## DIMENSIONS AND TECHNICAL SPECIFICATIONS

Model	J355 F M30	J355 F M30 Stainless Steel
Cylinder height from ground	39.4 in (1000 mm)	
Cylinder diameter	14 in (355 mm)	
Cylinder material	Steel S355JR EN10210 0.63 in (16mm) thick	
Cylinder treatment	Cataphoresis and polyester powder paint, dark grey metallised RAL 7021	Stainless Steel AISI 316L satin finish
Reflective strip height	2.2 in (55 mm)	
Standard reflecting strip color	White	
Break in resistance	656 Kjoules	
Total weight	1437 lb (652 Kg)	

J355 F M30





#### PAINTED STEEL VERSION

Model	Height	Finish	Part No.
J355 F M30	39.4 in (1,000 mm)	painted steel	116321

##### The product comes with:

- 0.63 in (16 mm) thick steel cylinder with cataphoresis treatment and painted
- powder paint, dark grey metallised RAL 7021
- flashing light ring with LED lights\*
- "shallow mount" support structure to be mounted inground

(\* The power supply unit (24 Vdc) and the cable (AWG16) for the lights ring are not supplied.

#### AISI 316L STAINLESS STEEL VERSION

Model	Height	Finish	Part No.
J355 F M30	39.4 in (1,000 mm)	satin-finished AISI 316L stainless steel	116341

##### The product comes with:

- 0.63 in (16 mm) thick steel cylinder with cataphoresis treatment and satin-finished stainless steel «sleeve»
- flashing light ring with LED lights\*
- "shallow mount" support structure to be mounted inground.

(\* The power supply unit (24 Vdc) and the cable (AWG16) for the lights ring are not supplied.



#### INSTALLATION ACCESSORIES

Item	Part No.	
Upper cover J355	63000948	



# J355 HA M50 Automatic bollard for use in perimeter security areas

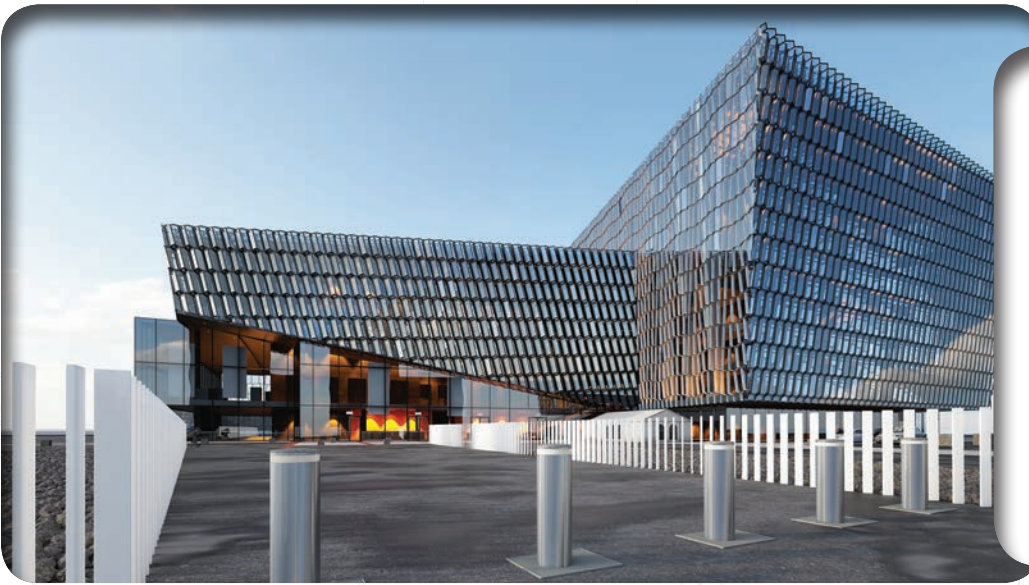
1. Tested according to PAS 68:2013 and IWA 14-1:2013 Standards
2. Impact resistance class N3 7.500-80 in SINGLE CONFIGURATION
3. Able to stop a 16,500 lb (7,500 kg) truck travelling at 50mph (80Km/h)
4. Lock in raised position guaranteed even in the event of a power failure
5. Also available in EFO (Emergency Fast Operation) version for very rapid rising
6. Integrated hydraulic unit



## DIMENSIONS AND TECHNICAL SPECIFICATIONS

Model	J355 HA M50	J355 HA M50 Stainless Steel	J355 HA M50 EFO	J355 HA M50 EFO Stainless Steel
Type of operator	Hydraulic operator			
Cylinder height from ground	47.2 in (1,200 mm)			
Cylinder diameter	14 in (355 mm)			
Cylinder material	Steel S355JR EN 10210 1.2 in (30mm) thick			
Cylinder treatment	Cataphoresis and polyester powder paint, dark grey metallised RAL 7021	AISI 316L satin finishing	Cataphoresis and polyester powder paint, dark grey metallised RAL 7021	AISI 316L satin finishing
Rising time	About 6 s			
Quick rise device	NO		YES (EFO)	
Emergency rising time	-		About 2 s	
Descent time	About 3 s			
Release device	optional			
Power supply voltage	220-240V ~ 50/60Hz			
Max. power	3.9 KW			
Hydraulic pump unit protection class	IP67			
Type of use	Use in security areas			
Max expressed force	2023 lbf (9,000 N)			
Break in resistance	1,852 KJoules			
Pit weight	518 lb (235 Kg)			
Traffic bollard weight	1874 lb (850 Kg)			
Operating ambient temperature	5 °F / 131 °F (-15 °C / +55 °C)			
Operating ambient temperature with heater	-40 °F / 131 °F (-40 °C / +55 °C)			

# J355 HA M50



### PAINTED STEEL VERSIONS

Models	Height	Finish	Part No.
J355 HA M50	47.2 in	painted steel	116351
J355 HA M50 EFO	(1,200 mm)		116352

#### The product comes with:

- 1.2 in (30 mm) thick steel cylinder with cathoporesis treatment and painted
- powder coated dark grey metallised RAL 7021
- flashing light ring with central LED
- hydraulic lock in raised position (in the event of a power cut)
- emergency circuit for fast rise (EFO version only)


### AISI 316L STAINLESS STEEL VERSIONS

Models	Height	Finish	Part No.
J355 HA M50	47.2 in	satin-finished AISI 316 L stainless steel	116381
J355 HA M50 EFO	(1,200 mm)		116382



#### The product comes with:

- 1.2 in (30 mm) thick steel cylinder with cathoporesis treatment and satin-finished stainless steel «sleeve»
- flashing light ring with central LED
- hydraulic lock in raised position (in the event of a power cut)
- emergency circuit for fast rise (EFO version only)

### ELECTRONIC EQUIPMENT

Item	Part No.	
Bollard electronic board JE275 able to manage up to max 1 bollard J355 HA	116300	

### INSTALLATION ACCESSORIES

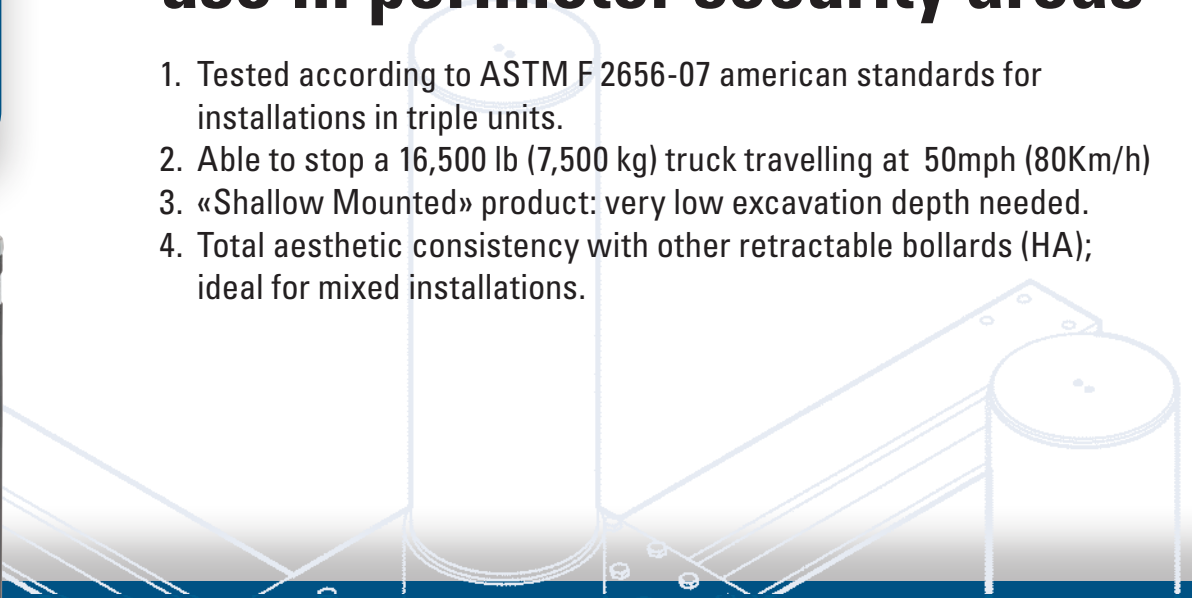
Item	Part No.	
Pit heater J355 (to extend operation up to -40°F (-40°C))	116202	
Pit for J355 HA	116130	





# J355 F M50 Fixed bollard for use in perimeter security areas

1. Tested according to ASTM F 2656-07 american standards for installations in triple units.
2. Able to stop a 16,500 lb (7,500 kg) truck travelling at 50mph (80Km/h)
3. «Shallow Mounted» product: very low excavation depth needed.
4. Total aesthetic consistency with other retractable bollards (HA); ideal for mixed installations.



## DIMENSIONS AND TECHNICAL SPECIFICATIONS

Model	J355 F M50	J355 F M50 Stainless Steel
Cylinder height from ground	47.2 in (1,200 mm)	
Cylinder diameter	14 in (355 mm)	
Cylinder material	Steel S355JR EN10210 1.2 in (16mm) thick	
Cylinder treatment	Cataphoresis and polyester powder paint, dark grey metallised RAL 7021	Stainless Steel AISI 316L satin finish
Reflective strip height	2.2 in (55 mm)	
Standard reflecting strip colour	White	
Break in resistance	1,680 KJoules	
Total weight	1499 lb (680 Kg)	

J355 F M50



#### PAINTED STEEL VERSION

Model	Height	Finish	Part No.
J355 F M50	47.2 in (1,200 mm)	painted steel	116371

#### The product comes with:

- 0.63 in (16 mm) thick steel cylinder with cathoporesis treatment and painted powder paint, dark grey metallised RAL 7021
- flashing light ring with led lights\*
- "shallow mount" support structure to be mounted inground

(\* ) The power supply unit (24 Vdc) and the cable (2x1.5 mm) for the illuminated ring are not supplied.

#### AISI 316 STAINLESS STEEL VERSION

Model	Height	Finish	Part No.
J355 F M50	47.2 in (1,200 mm)	satin-finished AISI 316 L stainless steel	116391

#### The product comes with:

- 0.63 in (16 mm) thick steel cylinder with cathoporesis treatment and satin-finished stainless steel «sleeve»
- flashing light ring with led lights\*
- "shallow mount" support structure to be mounted inground

(\* ) The power supply unit (24 Vdc) and the cable (AWG16) for the lights ring are not supplied.



#### INSTALLATION ACCESSORIES

Item	Part No.	
Upper cover J355	63000948	