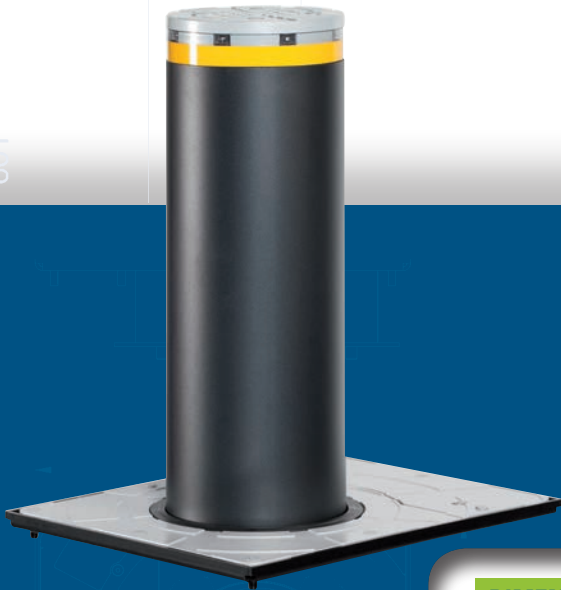




J200 F FIXED traffic bollard

1. Power supply and wiring not required
2. Simple installation and limited digging operations
3. Maintains aesthetic consistency in multi-bollard applications or where automatic bollards are not required



DIMENSIONS AND TECHNICAL SPECIFICATIONS

Model	J200 F H600	J200 F H600 Stainless steel
Cylinder height from ground	23.6 in (600 mm)	
Cylinder diameter	7.9 in (200 mm)	
Cylinder material	Steel S235JRG2 EN 10277 0.24 in (6mm thick)	Satin-finished AISI 316L 0.24 in (6mm thick)
Cylinder treatment	Cataphoresis and polyester powder paint, dark grey metallised RAL 7021	Satin finish
Reflective strip height	1 in (25 mm)	
Standard reflecting strip color	Orange	
Total weight	77 lbs (35 Kg)	
Walled in pit with cylinder profile (LxWxH)	16 x 20 x 32 in (400 x 500 x 800 mm)	

J200 F



PAINTED STEEL VERSION

Model	Height	Finish	Part No.
J200 F 600	23.6 in (600 mm)	powdered steel	116506

The product comes with:

- 0.24 in (6 mm thick) stainless steel cylinder with satin-finished treatment
- Powder paint, dark grey metallised RAL 7021

AISI 316L STAINLESS STEEL VERSION

Model	Height	Finish	Part No.
J200 F 600	23.6 in (600 mm)	satin-finished AISI 316L stainless steel	116507

The product comes with:

- 0.24 in (6 mm) thick stainless steel cylinder with satin-finished treatment

OPTIONAL ACCESSORIES

Item	Part No.	
LED lights kit J200*	116504	

(*) The power supply unit (24 Vdc) and the cable (AWG16) for the lights ring are not supplied.

