

S450H



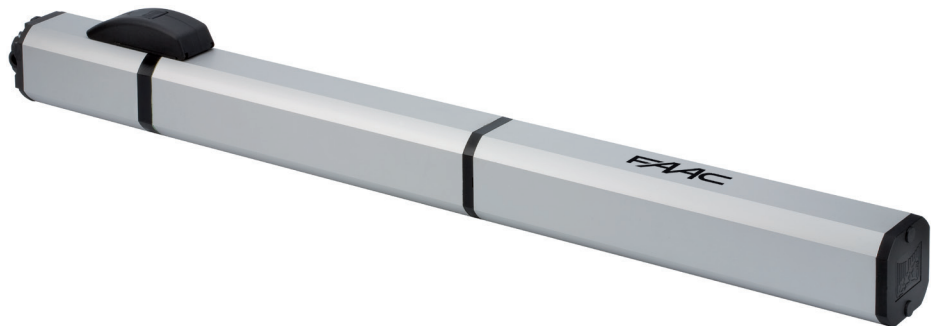
Hydraulic Swing Gate Operator

maximum leaf width

12-14 ft

maximum leaf weight

1000 lb



- Hybrid technology
- Integrated encoder to control operator position
- Useful stroke 12.2 in (311 mm)
- New “multi-position” bracket for non-welded applications
- Opening/Closing mechanical stops included
- Maximum safety thanks to the E024U control board reverse on contact feature
- Built in battery backup to ensure operation in case of power outage
- Compliant with UL325 for Class I,II,III and IV applications

TECHNICAL SPECIFICATIONS

Model	S450H CBAC	S450H SB
Input voltage	24 Vdc	
Power	60 W	
Max Thrust	1124 lbf (500 daN)	
Rod stroke	12.2 in (311 mm)	
Minimum time to open 90°	12 sec	
Maximum leaf width	14 ft (4.3 m)	17 ft (5.2 m)
Maximum leaf weight	1100 lb (500 Kg)	
Operating ambient temperature	-4°F - 131°F (-20°C - +55°C)	
Use frequency	continuous	
Operator weight	14.3 lb (6.5 Kg)	
Operator dimensions	43.8 x 3.3 x 4.7 in (1113x85x119 mm)	
Protection class	IP 55	
Hydraulic locks	installed	not installed

NOTE

- Mounting dimensions, wind factor and gate design will affect performance specification
- Use frequency is measured at an ambient temperature of 72 °F (20 °C) . Temperature variation will affect it.
- An electric or magnetic lock is recommended for any gate longer than 12 ft (3.6 m).

S450H

Model	Shipping Wt (approx)	Oil type	Part No.
S450H CBAC - Single Kit	58 lb (26.4 Kg)	Regular	104100.5
		Arctic	1041001577.5
S450H CBAC - Slave Kit	48 lb (21.4 Kg)	Regular	10410015.5
		Arctic	10410015177.5
S450H SB - Single Kit	58 lb (26.4 Kg)	Regular	104101.5
		Arctic	1041011577.5
S450H SB - Slave Kit	48 lb (21.4 Kg)	Regular	10410115.5
		Arctic	10410115177.5
S450H CBAC - Operator Only (with locks)	28 lb (12.2 Kg)	Regular	10410015
		Arctic	1041001577
S450H SB - Operator Only (without locks)	28 lb (12.2 Kg)	Regular	10410115
		Arctic	1041011577

The package S450H - Single Kit contains:

Qty	Description	Part Number
1	Operator S450H	Various
1	E024U Enclosure Kit	3350.1
2	Batteries 12V 8 Ah	3540
1	Receiver 433 RC Plug In	787741
2	4-channel transmitter XT4 433 RC	787453
1	Pair of XP 30 photobeam photocells	785105
2	XP 30 adapters for conduit connection	401064

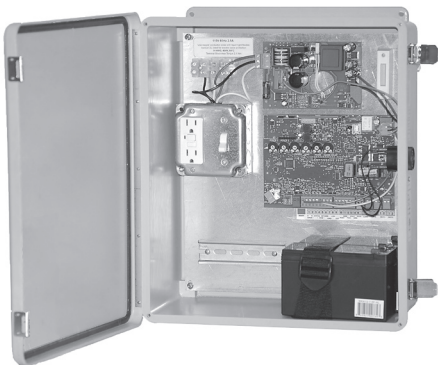
NOTE: For a master/slave (bi-parting) application add a Slave Kit.

The package S450H - Slave Kit contains:

Qty	Description	Part Number
1	Operator S450H	Various
1	Junction Box for electrical connections	3361.1
1	AWG 12 - 2 conductors cable (operator) 40 ft *	2197
1	AWG 22 - 2 conductors cable (encoder) 40 ft	2193

(*) The AWG 12 cable can be used for connections of up to 50' of length between the operator and the control board.

E024U 24V Control Board



- UL325 and UL991 safety standard compliant
- Powerful and efficient switching Power Supply
- Easy Programming with trimmers and dip switches
- One pushbutton automatic time learning
- Self resetting fuses
- Built in battery backup
- Low current idle mode to preserve battery
- Opening and closing delays selectable for overlapping gates
- Speed and force adjustable with trimmers
- Control Board firmware upgradable via USB
- Solar Powered option

TECHNICAL SPECIFICATIONS

Input Voltage	115 VAC (+10% -6%)
Input power	400 W max - 4W stand by
Motor output current max	7 A
Accessory Power	24 Vdc - 500 mA
Operating Temperature	-4°F - 131°F (-20°C - +55°C)
Dimensions	17.5 x 15.5 x 6.2 in (445x393x157mm)
Weight (without batteries)	15.5 Lbs (7 kg)
Protection class	NEMA type 3, 3R, 4, 4X, 12 and 13
Operating logics	Semiautomatic (E); Automatic (A); Security (S); Semiautomatic step by step (EP); Automatic step by step (AP); Security step by step (SP); Manned pulsed (B); Manned constant